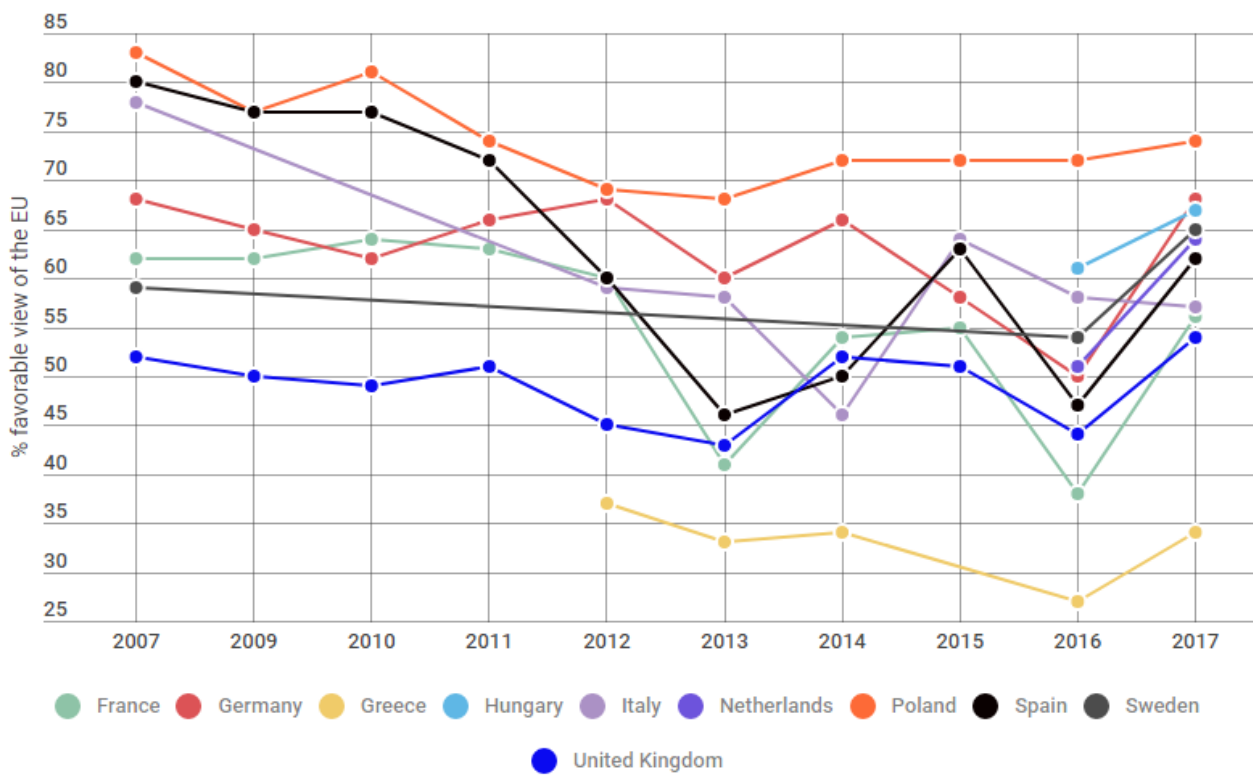


What is the mood of European citizens towards the **European Union (EU)** after the recent turbulent years marked by economic recession, increasing migration flows and **Brexit**?

### How much favorable is your view of the EU?



Question: "Please tell me if you have a very favorable, somewhat favorable, somewhat unfavorable or very unfavorable opinion of the European Union"

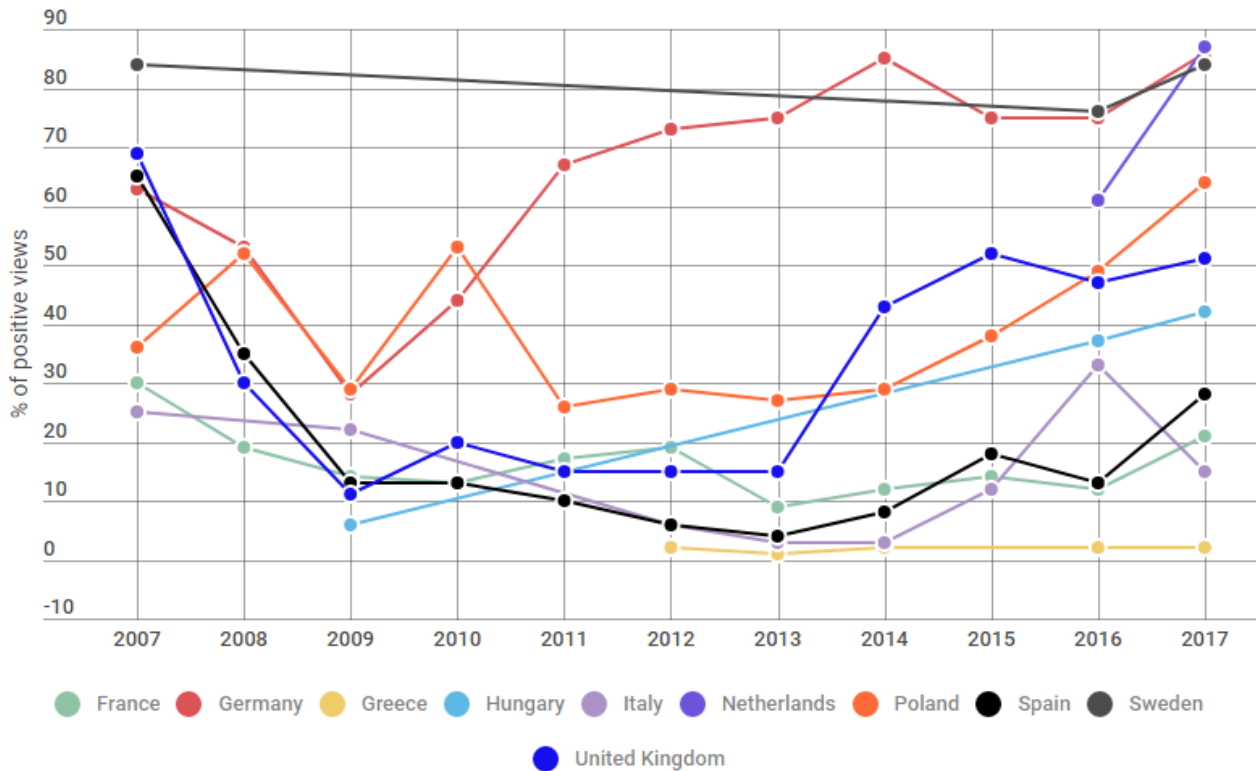
Note: percentages of favorable views of the EU are given by the sum of the percentage of those who express a very favorable or a somewhat favorable view of the EU.

Source: PEW Research Center - Global Attitudes Survey (2007-2017)

The [Pew Research Center](#), with its [Global Attitudes Survey](#), allows us to analyse the longitudinal trend of European citizens' support for the EU. In several waves, this survey

asked respondents in ten European countries to express their view of the EU. Not surprisingly, all countries experienced a sharp decrease in public support for the EU with the outbreak of the **economic crisis (2010-2013)**. In fact, the average share of people expressing a favourable view of the EU in **2012 (56.8%)** was **12** percentage points lower than the value in **2007 (68.8%)**. Moreover, most of the countries showed a further decrease in public support for the EU in **2016**, in correspondence of Brexit. However, nine of the ten countries, including the **United Kingdom (UK)**, showed a rising confidence in the EU in **2017**. The average share of people expressing a favourable view of the EU in **2017 (60%)** was ten percentage points higher than in **2016 (50%)**. Italy was the only country that deviated from this trend.

## How do you judge the current economic situation in your country?



Question: "Now thinking about our economic situation, how would you describe the current economic situation in (survey country) - is it very good, somewhat good, somewhat bad or very bad?"

Note: percentages of positive views of the current economic situation are given by the sum of the percentage of those who express a very good or a somewhat good view.

Source: PEW Research Center - Global Attitudes Survey (2007-2017)

In line with a common [theoretical argument](#) explaining European support, a rising and favourable view of the EU is associated with an increasing confidence in the economic rebound in countries surveyed. While in **2012**—the peak of the sovereign debt crisis—the average share of respondents expressing a positive view of the economic situation in their country (**21%**) was more than **30 percentage points** lower than in **2007 (53%)**. In **2017**, that proportion increased in eight of the ten countries, reaching a value of **40.5%** of

## Everyone fell in love with the EU again, but Italy

By Alessandro Pellegata

respondents. Only in **Greece** and **Italy**, the public confidence for the current economic situation did not increase. In Greece, the share of respondents expressing a positive view of the economy remained the same in **2016**, whereas it sharply decreased in Italy.

---

*Photo Credits CC: [European Parliament](#) feat. Alexander Damiano Ricci*